

Zebra Mobile Computing AI Suite

Simplified development of high performance enterprise AI applications for your Zebra mobile computers

Augment your Zebra mobile devices with advanced AI tools that empower frontline workers to complete tasks faster, easier and more accurately with the Zebra Mobile Computing AI Suite. This complete suite provides everything you need to rapidly and cost-effectively develop high-performance AI vision applications on Zebra mobile computers. Eliminate manual steps in your workflows to boost operational and workforce efficiency with trained models in the AI Data Capture SDK, plus Solution Accelerators — ready-to-use sample applications and Application Programming Interfaces (APIs). Now you can develop and deploy AI vision applications in days instead of months — significantly accelerating time to market and your return on investment.



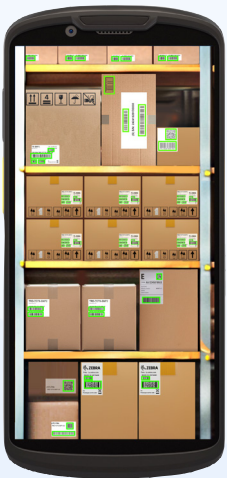
AI Data Capture SDK

Save time and money with trained models

Proprietary trained models make it easy to leverage the power of AI in enterprise applications in a wide variety of markets and industries. Trained AI models eliminate the high cost of: cloud solutions; the substantial time required to train the custom models; the need for highly skilled, experienced AI developers; and the resources required for training — such as hundreds of thousands of barcodes and images. The models include Barcode Localizer, Shelf and Product Localizer, Product Recognizer, Feature Extractor and OCR/Text Recognizer.

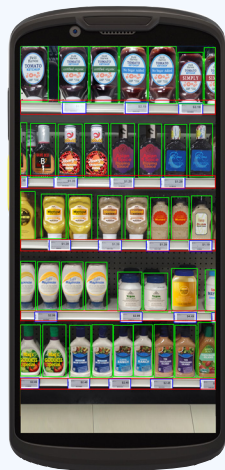
Trained AI models

Barcode Localizer



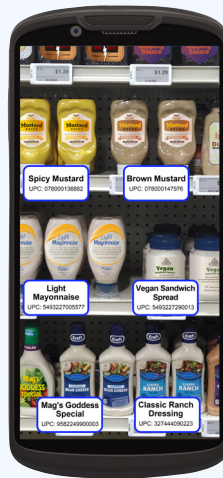
Instantly detects all barcodes in an image. Barcodes can be on labels on boxes, parcels or shelves and can be decoded as desired.

Shelf and Product Localizer



Finds all products, price labels, shelf labels, peg labels and shelf facings in a single image and can accommodate various reading distances based on aisle width.

Product Recognizer



Finds and recognizes products on shelves — a capability that can help locate an item, determine what items need restocking, recognize and ring up items at a Point of Sale (POS) and more.

Feature Extractor



This enabling capability for the Product Recognizer model extracts and stores key features of a product to enable product recognition.

OCR/Text Recognizer



Detects and recognizes text and characters in an image and decodes the text into words with extreme accuracy. Supports a wide variety of fonts, font sizes, text orientation and lighting conditions.



Solution Accelerators

Take development speed to the next level with sample applications and APIs



Zebra has further refined the AI models into sample applications that can be used as building blocks to turbocharge application development. This library of sample apps features typical enterprise use cases that can be utilized as standalone apps or integrated into a larger, more fully-featured app. For example, one sample app identifies all the barcodes in an image and highlights which barcodes require a worker to take action — enhancing inventory counting, picking workflows and more. Another sample app allows a worker to simply snap a photo of retail shelves to automatically capture the product and label information required to document planogram compliance. And Application Programming Interfaces (APIs) make it easy to add AI vision capabilities into any line of business app, opening up a world of possibilities to streamline just about any business process.

Why Choose Zebra Mobile Computing AI Suite as your preferred AI application development platform?

The Zebra Mobile Computing AI Suite makes it easy to streamline workflows to improve productivity for retail and warehouse workers, delivery drivers and more — unlike open-source generic models, all the resources in the suite are optimized for real-world enterprise applications, putting you ahead of the curve. And since the Zebra Mobile Computing AI Suite is designed specifically for Zebra mobile computers, you can count on the AI apps you develop to deliver maximum performance on Zebra mobile devices.

Unlock the potential of your frontline workforce with the Zebra Mobile Computing AI Suite to optimize workflows, streamline processes and simplify complex tasks.

For more information, visit www.lexter.com/zebra-mobile-computing-ai-suite



NA and Corporate Headquarters
+1 800 423 0442
inquiry4@zebra.com

Asia-Pacific Headquarters
+65 6858 0722
contact.apac@zebra.com

EMEA Headquarters
zebra.com/locations
contact.emea@zebra.com

Latin America Headquarters
zebra.com/locations
la.contactme@zebra.com